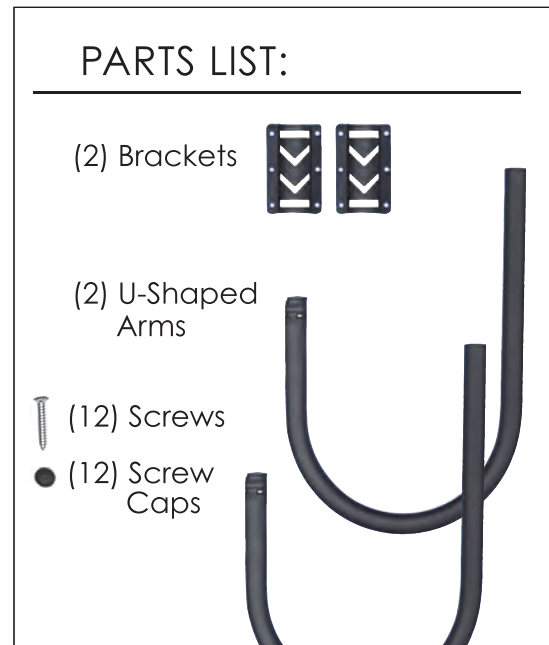


COVER HOLDER

INSTALLATION INSTRUCTIONS:

1. Slide **BRACKETS** onto each **ARM** until Swivel Button locks in position.
2. Determine the location on the spa:
Width: The **BRACKETS/ARMS** should be mounted level and as far apart as possible to securely suspend the width of the cover. Preferably 36" or more. Mount on a straight surface and not on curved spa corners.
Height: The higher you mount the **BRACKET/ARMS** on the spa, the less the cover will drop behind the spa when open. Determine where you would like the **ARMS** to position the cover.
3. Attach to the spa using the **SCREWS** provided.
4. Apply **SCREW CAPS**.

Warning:
Every hot tub manufacturer uses their choice of spa siding. Some are thicker/stronger than others. It is recommended that you check with the manufacturer or retailer of your spa brand before mounting any kind of cover lift, towel bar, entry rail or other spa mount accessory to your hot tub exterior.



Manufactured for:

ESSENTIALS

Essentials is an industry leader in spa accessory and maintenance products. To view our complete product offering, visit us at

Essentials-SpaSupplies.com.

All items can be ordered through your local retailer.